



Garrett-Jacobs Mansion
Endowment Fund, Inc.

ANNUAL REPORT 2019

“Welcome everyone” were the watchwords for the Garrett-Jacobs Mansion Endowment Fund (GJMEF) in 2019.

With the completion of the much-anticipated Tower Project, all public spaces in the Mansion are ADA compliant. Newly built fire stairs and a new high-capacity water supply to the upper floors improve our fire-safety capacity. Our new elevator and accessible restrooms make visiting the Mansion much more comfortable.

Since project completion, GJMEF has worked diligently to create opportunities for the public to use the building. Through our partner organizations, we have provided numerous concerts, lectures, exhibitions, award ceremonies, banquets, educational seminars, and happy hours. Through the efforts of the GJMEF, more than 3,000 people enjoyed visiting the Mansion. They toured, dined sumptuously, and tasted wines and whiskies amid the ambiance of the carefully restored and newly ADA-compliant Mansion.

Bringing the public into the Mansion to celebrate its magnificence and its importance to the history of both Baltimore City and the nation is a priority. We are grateful to the Engineering Society of Baltimore for bringing life to the Mansion and sharing it with others. We look forward to continuing to host the public at a variety of programs that take advantage of the Mansion’s gracious spaces as a venue for hospitality in the future.

Carl Eastwick, President



Photo: Britt Olsen-Ecker, Baltimore Concert Opera



The Garrett-Jacobs Mansion incorporates 7, 9, and 11 West Mount Vernon Place



The Mansion's spiral staircase was designed by Stanford White.

MISSION STATEMENT

The mission of the Garrett-Jacobs Mansion Endowment Fund is to preserve and restore the Mansion as a National Historic Landmark and to share the history, architecture, and civic legacy of the Mansion for the benefit and education of the public.

OUR STORY

During America's Gilded Age, the Garrett-Jacobs Mansion, dubbed "Mr. Garrett's Palace" by newspapers of the day, was the hub of Baltimore's elite social scene. Designed by famed architects Stanford White and John Russell Pope, the Mansion dazzled guests with the hospitality of its owners, Robert Garrett and his socially prominent wife, Mary Frick Garrett Jacobs.

Number 11 West Mt. Vernon Place was gifted at their wedding by Robert's father, B&O president John Work Garrett. Expanding and embellishing the mansion would become a lifelong project for Mary Frick, through widowhood and a second marriage to Dr. Henry Barton Jacobs. Throughout her six decades as doyenne of Baltimore society, the Garrett-Jacobs Mansion was a showpiece of culture.

This lively hospitality faded in the years following Mary Frick's death in 1936 as the Mansion changed ownership and faced near destruction. In 1962 a new era was introduced as the Engineering Society of Baltimore, Inc. (ESB) assumed ownership, making the Mansion its headquarters and dedicating itself to its restoration and maintenance. The ESB established the Garrett-Jacobs Mansion Endowment Fund (GJMEF) in 1992 and since that time has raised more than \$8 million for its mission to restore and preserve the Mansion. Beyond its commitment to the Mansion's physical grandeur, the GJMEF seeks to share its history, architecture, and civic legacy to benefit and educate the public. Our Spring publication, *The Legacy*, featured the philanthropy of Mary Frick.

In the tradition of Mary Frick Garrett Jacobs' legendary hospitality, we are pleased to open our doors to the public through a variety of events. Our monthly "Taste & Tour" and Quarterly Networking Happy Hours provide a casual opportunity to enjoy the Mansion. The Artists-in-Residence program provides a home for Baltimore Concert Opera: In this fiscal year, 2,266 attendees enjoyed 12 opera performances in the ballroom designed by John Russell Pope. Audiences also filled the ballroom for a lecture series by engaging historians co-sponsored by Baltimore Heritage. And, in September 2019, we were excited to host the first-ever Mount Vernon Place Plein Air Art Show, a fundraiser that featured nearly



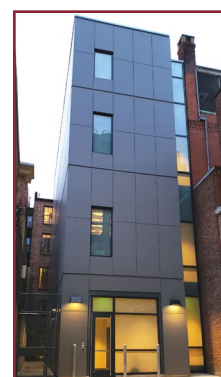
Photo: Britt Olsen-Ecker, Baltimore Concert Opera

100 paintings of the historic Baltimore neighborhood. Look for this exciting event again in 2020.

This year, these events were enhanced by the practical considerations of public safety and accessibility, with the long-anticipated opening of the Mansion's new tower addition. Upgrades included a ground-level entrance, elevator, accessible bathrooms, and fire-safety upgrades. In the coming year, we look forward to welcoming more visitors to attend our public events and enjoy the Mansion's famed hospitality.



Photo: Jesse Gabbin



The Tower Project features a new elevator and enhanced fire safety.

THE GARRETT-JACOBS MANSION RESTORATION AND PRESERVATION MASTER PLAN

Phase One (Completed)

- Courtyard Enclosure (2006)

Phase Two (Completed)

- Drawing Room restoration (2007)
- Ballroom restoration, Parts 1-3 (2012)
- Pope Library restoration (2012)
- Caen Stone Hall restoration, Part 1 (2012)
- Tower Addition with ADA-compliant restroom and elevator (2018)

Phase Three (Ongoing)

- Ballroom restoration, Part 4 (\$170,000 needed to complete)
- Caen Stone Hall restoration, Part 2 (\$200,000)
- Heritage Room and Tapestry restoration (\$1,000,000)
- Additional Fire Suppression (Sprinklering) (\$100,000)

BY THE NUMBERS

In 2019, the Garrett-Jacobs Mansion Endowment Fund (GJMEF) finalized expenditures for the Tower Addition. Total funding for this project amounted to \$3,028,733. The grand total for Capital Improvements funded by the GJMEF since 1992 is \$8,194,291.

STATEMENTS of FINANCIAL POSITION As of June 30, 2019 and 2018

	2019	2018
ASSETS		
Cash and cash equivalents	\$218,665	\$280,893
Investments	\$115,660	\$105,823
Accounts receivable	\$8,000	-
Receivable from related party	\$100,000	-
Pledges and grants receivable, net	\$508,464	\$105,823
Construction in process	-	\$2,275,993
Deposits	\$2,450	\$2,750
Total Assets	\$953,239	\$3,471,715
LIABILITIES & NET ASSETS		
Liabilities		
Accounts payable	\$195	\$252
Deferred revenue	\$3,500	-
Note payable	\$935,142	\$536,912
Total Liabilities	\$938,837	\$537,164
Net Assets		
Without donor restrictions	\$4,402	\$2,828,728
Without donor restrictions - board designated	-	\$95,823
With donor restrictions	\$10,000	\$10,000
Total Net Assets	\$14,402	\$2,934,551
Total Liabilities & Net Assets	\$953,239	\$3,471,715

OPERATING INCOME STATEMENT - through JUNE 2019

	YTD ACTUAL	ANNUAL BUDGET	VARIANCE
OPERATING REVENUE			
Fireball	\$123,422	\$130,000	-\$6,578
Friends of the Mansion	\$996	\$3,000	-\$2,004
Golf Outing	\$105,300	\$92,000	\$13,300
Crush	\$52,218	\$46,000	\$6,218
Cultural Events (symposium, concerts, etc)	\$3,137	\$500	\$2,637
Interest Income - Operating Money Market Account	\$125	\$50	\$75
Other Income	\$294	\$50	\$244
Total Revenue	\$285,492	\$271,600	\$13,892
OPERATING EXPENSES			
Fireball	\$68,628	\$73,000	-\$4,372
Golf Outing	\$45,390	\$47,000	-\$1,610
Crush	\$27,062	\$24,000	\$3,062
Accounting Fees	\$7,600	\$8,000	-\$400
Dues	\$250	\$500	-\$250
Print Media	\$2,500	\$3,200	-\$700
Website & Social Media	\$11,100	\$15,200	-\$4,100
Directors Liability Insurance	\$898	\$1,000	-\$102
Administrative Support	\$1,200	\$1,200	\$0
Mansion Maintenance	\$20,000	\$20,000	\$0
Interest Expense	\$0	\$0	\$0
Capital Campaign Expenses	\$5,003	\$500	\$4,503
Government Relations Consultant	\$10,103	\$12,800	-\$2,697
Other Expense	\$125	\$500	-\$375
Total Expenses	\$199,859	\$209,000	-\$9,141
Net Operating Income (Loss) Year-to-Date	\$85,633	\$62,600	\$23,033



Baltimore Concert Opera entertained 2,250 opera enthusiasts at twelve performances that included the popular "Thirsty Thursday," held in the Mansion's ballroom. Photo: Baltimore Concert Opera



Our Speakers Series, co-hosted by Baltimore Heritage, drew over 600 amateur historians to the Mansion. Speaker Wayne Schaumburg's talk about the Great Baltimore Fire of 1904, seen in this iconic image, was the best seller of the series. Photo: Library of Congress



Our inaugural season of Taste & Tour drew over 120 participants, who learned about how the history of the Garrett family and the architecture of the Mansion are emblematic of the United States during the Gilded Age, while enjoying the evening's signature cocktail. Photo: Jessea Gabbin

THE GARRETT-JACOBS MANSION ENDOWMENT FUND BOARD MEMBERS:

Carl Eastwick, President

Frank Dittenhafer, Vice President

Bernadette Low, Ph.D., Secretary

Douglas F. Suess, Treasurer

Robert W. Crosby

Lisa Keir

Michael Dick

Christopher T. McCarthy

Jeffrey Caldwell

Judith Proffitt

James A. Durkay

Bruce Votta

David H. Gleason

Harold K. (Hal) Resnick, Ph.D.

Sally Johnston

John Carroll Weiss, III

Johns W. Hopkins, Jr.

To **learn more** about the
Garrett-Jacobs Mansion
or to **donate** please visit

www.esb.org

and select Garrett-Jacobs
Mansion Endowment Fund

Sign up for our
Heritage E-Newsletter
at **heritage@esb.org**



Garrett Jacobs Mansion Endowment Fund

THE GARRETT-JACOBS MANSION DONORS

Diamond Level \$100,000+

Constellation Energy Foundation
The France-Merrick Foundation
M. Nelson Barnes and Sons
The members of the
Engineers Club
The Stasiak Foundation
The State of Maryland
The Whiting-Turner Contracting
Company
WBCM, LLC

Platinum Level \$50,000+

ASHRAE
CFG Community Bank
The Gladding Foundation
William E. Koffel
Maryland Historical Trust
Charles A. Meyer, Sr.
The Middendorf Foundation
RMF Engineering
Society of American Military
Engineers
Bruce T. Votta

Gold Level \$25,000+

American Council of
Engineering Companies
American Society of
Civil Engineers
John B. Gillett
James Posey Associates
Kimball Construction Company
Robert F. Leach
Bruce Rippey

Silver Level \$10,000+

Courtney Alvey
American Concrete Institute
Karen Ann Banas
Barry W. Casanova
The Count Program
Steven Wayne Ellwood and
Wade Hampton Ellwood
ESB Women's Auxiliary
Evapco, Inc.
Greenhorn & O'Mara, Inc.
Johnson, Mirmiran & Thompson
Jean M. H. Jung
Gus Karayinopoulos
Richard W. Magnani, P.E.
John Maynes
Chris McCarthy
Fred Mirmiran
Mueller Associates, Inc.
Terry F. Neimeyer
Nicholas Nucci
Robert E. Prince
Quality Solutions, LLC
Timothy Regan
Rummel, Klepper & Kaul, LLC
Schlenger Pitz & Associates
SMP Architects
Dale & Valeria Whitehead
Clifton Wallace, Jr.

Bronze Level \$2,500+

Michael J. Abromaitis
W. Arthur Barrett, II
Ursula Beitter
Murry Bentley

Mr. and Mrs. Charles Berry
William O. Boland
Jay and Karen Buck
Bruce S. Campbell, III
Valerie Casio
Tim Cech
Stephen Clarke, Jr.
Robert W. Crosby, P.E.
Ken Derrenbacher
Michael Dick
Douglas Dollenberg
James Dorf
Stephen P. Duffy
James Durkay
Carl Eastwick
EMJAY Engineering
Kim & Frank Fillmore
Fox Industries
Peggy Williams Frazier
Gipe Associates
William Gluck
Herber A. Hanson
Charles E. Henck
Henry H. Lewis Contractors, LLC
Stephen Hudson
Charles Irish
Henry Johnson
Mr. & Mrs. C. Kent Jordan
John E. Kacur, Sr.
Duncan and Lisa Keir
Kibart Inc.
Michael Lamdin
Richard Lange
Wendell Leimbach
Richard C. Lortz
Phillip C. Martien
George V. McGowen

Col. Joseph McLaughlin
David Mongan
Emma Carroll Mosner
Michael and Christi Myers
N.H. Yates & Company
Edward Ochrczin
David B. Openshaw, P.E.
Provident Bank
Harold K. Resnick
M. Delmar Ritchie
William Michael Ross
Sabra, Wang & Associates
Schnabel Engineering
Larry S. Shannahan
Mark Sheppard
Devindar S. Sidhu
Nancy Smith
Adam E. Snavely
Stantec Consulting Services
Cecily (Ginger) Suchy
Douglas F. Suess
John W. Taylor, Jr.
Denise Tegtmeier
David Tufaro
United Energy Products
Michael J. Walkley
Ward Boland Associates
Gary N. Weedon
John Carroll Weiss, III
Whitman Requardt & Associates
Alexander Whitney, Jr.
Kenneth Wingate
George and Carol Wirth
J.H. Yates, Jr.
Sue Zaren